

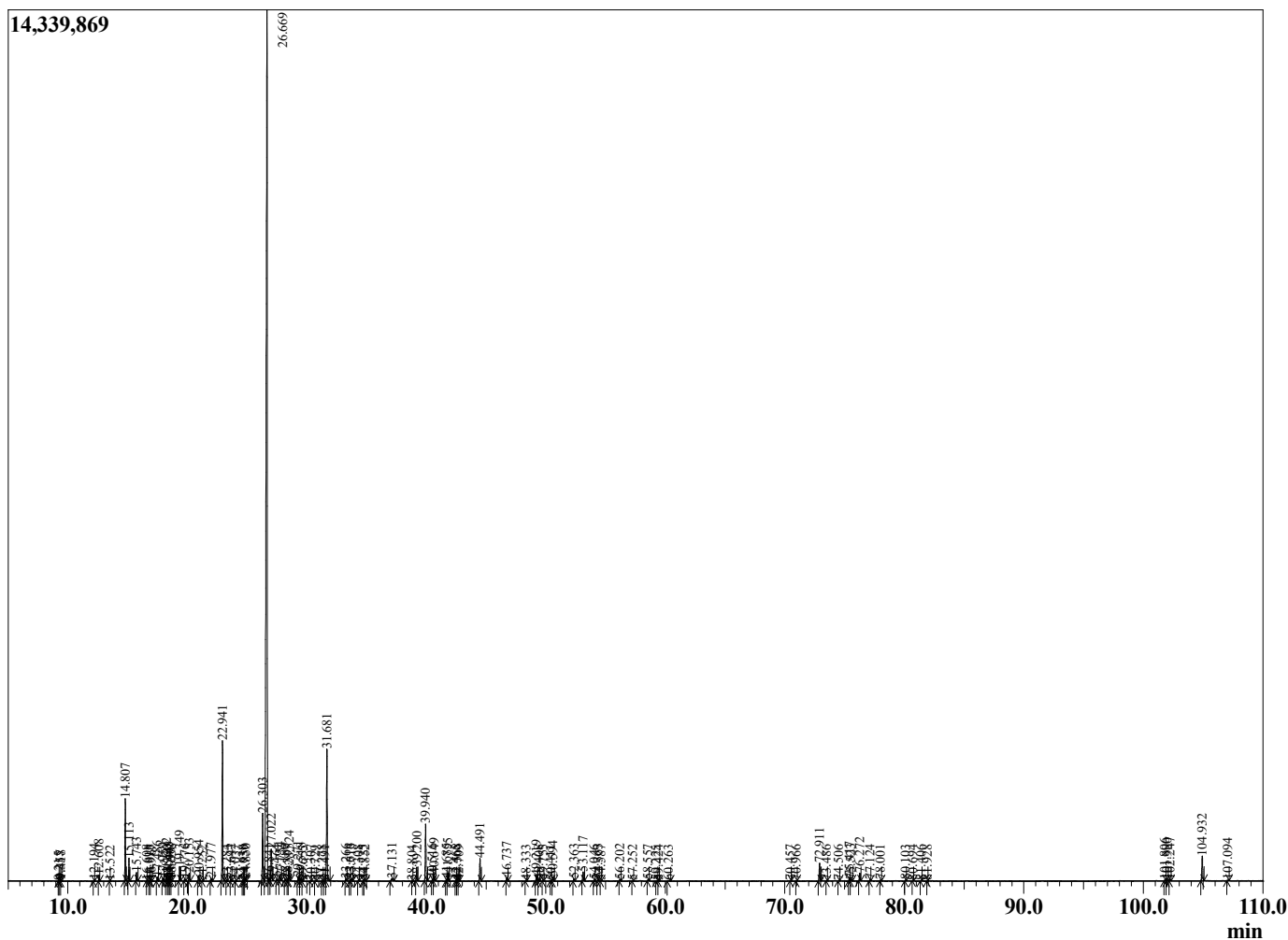
Sample Information

Sample Type : Essential Oil
 Sample Name : Citrus hystrix
 Injection Volume : 0.10

Combava Petitgrain
 Lot# MAX13-XH
 Country: Madagascar



Chromatogram Citrus hystrix



R.Time	Name	Area%
9.215	Unidentified	0.01
9.357	cis-1-Isopropyl-3-methylcyclopentane	0.03
9.418	trans-1-Isopropyl-3-methylcyclopentane	0.04
12.194	alpha-Thujene	0.05
12.608	alpha-Pinene	0.19
13.522	Camphene	0.01
14.807	Sabinene	2.92
15.113	beta-Pinene	0.82
15.743	Myrcene	0.33
16.608	Octanal	0.01
16.818	alpha-Phellandrene	0.01
16.967	delta-3-Carene	0.04
17.486	alpha-Terpinene	0.15
17.959	para-Cymene	0.11
18.262	Limonene	0.28
18.360	beta-Phellandrene	0.02
18.445	Dihydromyrcenol analogue	0.13
18.567	Dihydromyrcenol analogue	0.15
18.658	cis-beta-Ocimene	0.05
19.349	trans-beta-Ocimene	0.56
19.776	2,6-Dimethyl-5-heptanal (melonal)	0.08
20.153	gamma-Terpinene	0.31
20.954	cis-Linalool oxide (furanoid)	0.23
21.252	Non-(2E)-enol	0.02
21.977	Terpinolene	0.17
22.941	Linalool	6.02
23.284	Nonanal	0.03
23.642	cis-Rose oxide	0.07
24.037	Unidentified	0.02
24.638	cis-para-Menth-2-en-1-ol	0.02
24.759	trans-Rose oxide	0.03
24.850	Citronellol	0.09
26.303	Neoisopulegol	3.06
26.669	Citronellal	63.81
26.841	Menthone	0.11
27.022	Isopulegol	1.68
27.464	Isomenthol	0.03
27.754	Isoisopulegol	0.23
28.180	Citronellal analogue	0.07
28.397	Neoisopulegol	0.04
28.524	Terpinen-4-ol	0.66
29.271	Methyl salicylate	0.18
29.518	alpha-Terpineol	0.13
29.655	Unidentified	0.01
30.307	Decanal	0.01
30.729	Unidentified	0.02
31.278	Citronellyl nitrile	0.04
31.491	Nerol	0.04
31.681	Citronellol	6.10
33.266	Geraniol	0.10
33.616	Citronellal epoxide isomer	0.06
33.713	Citronellal epoxide	0.09
34.308	Unidentified	0.03
34.725	Unidentified	0.03
34.852	Citronellyl formate	0.05
37.131	Citronellic acid	0.19

R.Time	Name	Area%
38.804	delta-Elemene	0.01
39.200	Citriodiol	0.63
39.940	Citronellyl acetate	2.69
40.516	Neryl acetate	0.06
40.649	Citriodiol isomer	0.31
41.685	alpha-Copaene	0.08
41.795	Geranyl acetate	0.35
42.465	beta-Cubebene	0.03
42.568	beta-Elemene	0.06
42.709	Unidentified	0.03
44.491	beta-Caryophyllene	1.05
46.737	alpha-Humulene	0.16
48.333	Germacrene D	0.03
49.219	Bicyclogermacrene	0.27
49.408	alpha-Murolene	0.03
49.755	trans,trans-alpha-Farnesene	0.05
50.411	Cubebol	0.02
50.594	delta-Cadinene	0.20
52.363	Elemol	0.10
53.117	trans-Nerolidol	0.44
54.046	Spathulenol	0.04
54.363	Caryophyllene oxide	0.10
54.587	Globulol	0.02
56.202	Unidentified	0.06
57.252	10-epi-gamma-Eudesmol	0.03
58.557	epi-alpha-Cadinol	0.06
59.225	Unidentified	0.01
59.424	Patchouli alcohol	0.02
60.263	2,3-Dihydro-6-trans-farnesol	0.03
70.457	Unidentified	0.01
70.966	Unidentified	0.01
72.911	Citriodiol acetal I	0.92
73.486	Citriodiol acetal II	0.02
74.506	Unidentified	0.02
75.417	Citriodiol acetate III	0.19
75.523	Citriodiol acetal IV	0.08
76.272	Unidentified	0.36
77.124	Unidentified	0.04
78.001	Unidentified	0.03
80.103	Unidentified	0.04
80.694	Unidentified	0.01
81.406	Phytol	0.02
81.928	Unidentified	0.01
101.806	Unidentified	0.05
101.980	Unidentified	0.04
102.247	Unidentified	0.06
104.932	Unidentified	1.35
107.094	Unidentified	0.02
		100.00